

Virtual &
Face-To-Face
Leadership
Program

proteus
LEADERSHIP
creating great leaders

MULTI-SESSION PROGRAM

LEADING PEOPLE & CULTURE

For Leaders Of Communication, Behaviour, People And Culture



NEW AND
IMPROVED
2026
PROGRAM!



ABOUT THE PROGRAM

For leaders and teams to be able to successfully lead now and into the future, there are four essential sets of skills that they must have:

1. They must be able to **Create and Lead Positive Cultural Change**, both personally, and in the workplace
2. They must possess the ability to **Communicate Effectively** and get their ideas heard and accepted
3. Be able to have **Conversations That Matter** with all stakeholders in the business. This program has been designed to equip leaders and teams to confidently perform all four of these essential areas of leadership
4. Participants will discover simple, effective strategies and practices using a **powerful coaching model**. As a result, participants will be able to have genuine, regular coaching sessions with their staff to support them in reaching their full potential.

This program is practical and deals with the 'real issues' occurring in the workplace on a daily basis.

Help to improve your leadership flexibility by attending this powerful 'Leading People And Culture' program.

This program has been designed to equip leaders and teams to confidently perform all four of these essential areas of leadership.

The program is delivered either virtually over 4 x half-days, 1 week apart, or face-to-face over 2 x consecutive days.

These sessions will be supported by a 1 hour launch, pre-program and 1.5 hour Program Review.

BENEFITS OF TRAINING WITH PROTEUS

- ✓ **State of the art workbooks** which allow participants to immerse themselves into a truly engaging experience.
- ✓ **Group work** allowing participants to work in smaller groups to complete activities and workshop ideas.
- ✓ **World-class facilitators** who are dedicated to helping people change their behaviour and actions.
- ✓ **Inspirational and practical content** that can be used immediately.
- ✓ **Certificate of Completion and badge** that you can share on social media.

PROGRAM STAGES



Getting Started

Upon confirmation of your program, Proteus will provide you with the zoom link and additional comms to distribute to your team. Prior to the program, Proteus will provide you with an interactive workbook to download and use on the day of training. We ask all participants to pre install Zoom prior to the launch, to ensure that 1 device per person is used and that each participant has access to a web camera.

PL

Program Launch (Virtual)

This **1 hour virtual launch** will provide participants with an overview of the program introducing concepts relating to the topic. This will set participants up for success, both throughout the program, and in applying their learning back into the workplace.

This applies both Virtual and Face-to-face programs.

VIRTUAL

S1

S2

S3

S4

Program Sessions

Participants will attend either **4 x half-day virtual sessions** or **2 x full-day face-to-face sessions** and will be provided with an extensive program manual.

Our expert facilitators will work with participants to get the most from these sessions.

FACE-TO-FACE

S1/S2

S3/S4

PR

Program Review (Virtual)

This **1.5 hour virtual session** will focus on reviewing and embedding the learnings from the previous sessions. **This applies both Virtual and Face-to-face programs.**



Certificate Of Completion

Participants will receive a personalised 'Certificate of Completion' and a badge that they can share on social media and display in their profiles.



PROGRAM INVESTMENT

Individual Investment – Public Programs

Prices valid from January 1st 2026

Individual – (Virtual) ————— \$1,600pp + GST

Individual – (Face-To-Face) ————— \$1,950pp + GST

Corporate Table – 6 Delegates
(Face-to-face) ————— \$10,200 + GST

All prices are in AUD



“ A fantastically designed and presented workshop. I’ve attended A LOT of training and always expect to get something from it, however, this one differed in that it was all relevant, useful and interesting – money well spent! ”

Janine Phillis
Youth, Family and Community Connections Inc

“ The 2-day face to face program was action packed and very insightful. It has given me the tools and opportunity to be brave in difficult situations and for that I’m very grateful. ”

Jenny Harmer – Hume Bank

PROGRAM DATES

2026

Virtual (4-Half-Day Program)

Program Launch	Session 1	Session 2	Session 3	Session 4	Program Review
19 Feb	26 Feb	05 Mar	12 Mar	19 Mar	26 Mar

Face-To-Face (2-Full-Day Program)

Adelaide

Program Launch	Session 1 and Session 2	Session 3 and Session 4	Program Review
10 Jun	17 Jun	18 Jun	24 Jun

Virtual (4-Half-Day Program)

Program Launch	Session 1	Session 2	Session 3	Session 4	Program Review
16 Jul	23 Jul	30 Jul	06 Aug	13 Aug	20 Aug

Virtual (4-Half-Day Program)

Program Launch	Session 1	Session 2	Session 3	Session 4	Program Review
08 Oct	15 Oct	22 Oct	29 Oct	05 Nov	12 Nov

Face-To-Face (2-Full-Day Program)

Brisbane

Program Launch	Session 1 and Session 2	Session 3 and Session 4	Program Review
11 Nov	18 Nov	19 Nov	25 Nov

Multi-Session Programs (Virtual)

Program Launch 1:00pm – 2:00pm
 Session 1 9:00am – 12:30pm
 Session 2 9:00am – 12:30pm
 Session 3 9:00am – 12:30pm
 Session 4 9:00am – 12:30pm
 Program Review 1:00pm – 2:30pm
 AEST/AEDT

Multi-Session Programs (Face-to-face)

Program Launch 1:00pm – 2:00pm
 Session 1 & 2 8:45am – 4:30pm
 Session 3 & 4 8:45am – 4:30pm
 Program Review 1:00pm – 2:30pm
 AEST/AEDT

2026 1 Jan – 4 Apr — AEDT
 5 Apr ————— AEDT → AEST
 4 Oct ————— AEST → AEDT

Program Launch (Virtual) - 1:00pm - 2:00pm

For Virtual and Face-to-face programs

This 1 hour Virtual launch will provide participants with an overview of the program introducing concepts relating to the topics. This will set participants up for success, both throughout the program, and in applying their learning back into the workplace.

Program Sessions

Virtual - AM 9:00am - 12:30pm

Face-To-Face - 8:45am - 4:30pm

Session 1

Building And Leading Positive Workplace Cultures

- Creating, Leading And Modelling Great Cultures
- Staying Positive And Understanding The Importance Of Recognition
- Dealing With Miserable People And 'Fighting Clean'
- Leading A Robust And Resilient Workplace
- Leading And Embracing Change
- Helping Your Positive People To Shine

Session 2

The Power Of Great Communication

- Introduction To Presenting With Confidence
- Dealing With The Fear Factor
- Building Rapport With Your Audience
- Having A Clear Objective
- The 5-Step SOSOR Roadmap
- The 4 P's Of Presenting
- Keeping the Flow
- Body Language And Making A Positive Impression
- The Art Of Telling Stories
- Presenting In A Virtual World
- Dealing With Difficult Or Hostile Participants

Session 3

Having Conversations That Matter

- Having Conversations That Matter Early
- Why We Need To Be Proactive With Conflict
- Planning And Delivering Your Counselling Conversation
- How To Manage Staff Poor Performance And Behaviour
- Using The Proteus SIID Formula And Checklist
- Preparing For Your Conversations Across And Up With Diplomacy
- How To Use Your 5-Step Plan With Your Managers And Peers
- Transforming Relationships Within The Workplace

Session 4

Coaching With Confidence

- Why coaching is now an everyday expectation and practice
- Embracing your role as a workplace coach
- How to establish a Growth Mindset
- An overview of the GROW coaching model
- How to deliver coaching sessions
- Practice, practice, practice!

Program Review (Virtual) - 1:00pm - 2:30pm

For Virtual and Face-to-face programs

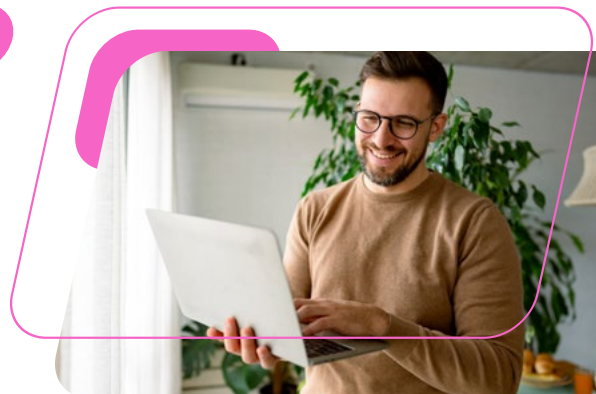
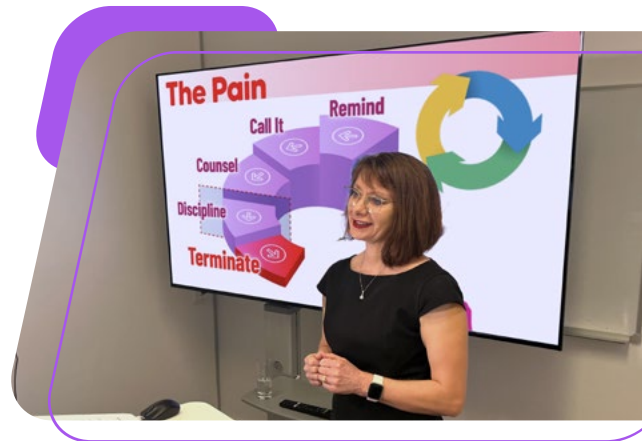
This 1.5 hour Virtual session will focus on reviewing and embedding the learnings from the previous sessions.

2026

1 Jan - 4 Apr __ AEDT

5 Apr _____ AEDT → AEST

4 Oct _____ AEST → AEDT



PROGRAM INVESTMENT IN-HOUSE

This Leadership program can also be conducted In-house (either Virtually, Face-to-Face or a Hybrid approach). Proteus facilitators will run your program for up to 15 people. Extra participants can be added at an additional cost.



Virtual Investment

Program Launch - 1 Hour (Virtual)

Program Welcome & Overview

Program Sessions - 4 x Half-Day (3.5 hours/day)

Up to 15 participants.

Program Review - 1.5 Hours (Virtual)

Individual or Group Presentations - Optional

Organised Internally by the Client

2026

\$24,000 + GST

Extra participants over 15 charged at \$1,395pp + GST



Face-to-Face Investment

Program Launch - 1 Hour (Virtual)

Program Welcome & Overview

Program Sessions - 2 x Full-Days (8 hours/day)

Up to 15 participants.

Program Review - 1.5 Hours (Virtual)

Individual or Group Presentations - Optional

Organised Internally by the Client

2026

\$29,250 + GST

Extra participants over 15 charged at \$1,695pp + GST

Hybrid (combination of Virtual and Face To Face delivery) options are available upon request. Additional travel costs may apply to rural and regional areas.



Virtual: Interactive Program manual PDF copy

Face-to-face: Printed Program manual



Proteus Certificate of Completion



Full Zoom & Teams Management for Virtual Programs



For further information contact our team on: 1300 219 903

Cancellation Policy: Payment is required before the commencement of training. All payments within 7 days of the program date must be paid by credit card or direct debit. All cancellations/transfers must be received in writing. Refunds will not be given unless at least 30 working days notice prior to the program is provided. No refunds will be given after this date. A 10% (of total

cost) administration fee will be deducted for all cancellations. If you are unable to participate, a substitute participant (transfer) is welcome if written notice is given prior to the program but will incur a \$75 administration fee. *Proteus Leadership reserves the right to change the facilitators/speakers or the advertised price.

USING ZOOM

Proteus Leadership has committed to using the ZOOM platform for our Virtual Webinars, Workshops and Multi-session programs. Here are some things about your ZOOM program that you should know:

- It is simple and intuitive to set up
- A link to your program will be sent to you on confirmation and then on the day of the program. You will be asked to click on the link, download and join the meeting or webinar
- You can participate on any device, however a desktop or laptop computer is recommended
- With updated security features, Zoom is a safe place to meet virtually
- Throughout your program, interactive features will be used including: Polls, Q&A and Chat boxes
- In our workshops and Leadership programs participants will be able to work in multiple breakout rooms where they can interact with each other in groups

Proteus facilitators will make your Virtual program an interactive and informative experience that will change the way you lead.

Virtual

All of our public and In-house programs will be running through the **Zoom platform**. Remember, you don't have to sign up to Zoom to use it.

PERSONAL COACHING

No matter how powerful and helpful a personal development program can be, sometimes we stumble when trying to implement the skills back into our workplaces.

To assist in this area, Proteus is now offering post program personal coaching sessions via Teams, Zoom or Phone. Each session is 45 minutes duration and is conducted by one of our professional team.

Coaching Investment

3 Sessions (\$650 per session)	\$1,950pp + GST
4 Sessions (\$600 per session)	\$2,400pp + GST
5 Sessions (\$550 per session)	\$2,750pp + GST

All prices are in AUD

Please feel free to speak to one of our helpful team to discuss a post program coaching plan for you and/or your team.

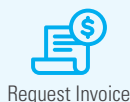
HOW TO REGISTER

Online

Payment Methods



Credit Card



Request Invoice

By phone

Call us on 1300 219 903

Payment Methods



Credit Card



Request Invoice



Direct Debit

proteus
LEADERSHIP

creating great leaders

www.proteusleadership.com

info@proteusleadership.com | 1300 219 903

Adelaide | Brisbane | Melbourne | Sydney | Central Coast - NSW | Noosa - Northern QLD