

Virtual &  
Face-To-Face  
Leadership  
Program

**proteus**  
LEADERSHIP  
*creating great leaders*

MULTI-SESSION PROGRAM

# LEADING PEOPLE & CULTURE

For Leaders Of Communication, Behaviour, People And Culture



# ABOUT THE PROGRAM

For leaders and teams to be able to successfully lead now and into the future, there are four essential sets of skills that they must have:

1. They must possess the ability to **Communicate Effectively** and get their ideas heard and accepted
2. They must also have an advanced **Understanding Of Themselves And Of Others**, so that they can build and lead high performing teams
3. They must be able to **Create And Lead Positive Cultural Change**, both personally, and in the workplace
4. Be able to have **Conversations That Matter** with all stakeholders in the business

This program has been designed to equip leaders and teams to confidently perform all four of these essential areas of leadership.

The program is delivered either virtually over 4 x half-days, 1 week apart, or face-to-face over 2 x consecutive days.

These sessions will be supported by a 1 hour launch, pre-program and 1.5 hour Coaching post-program.



## BENEFITS OF TRAINING WITH PROTEUS

- ✓ **State of the art workbooks** which allow participants to immerse themselves into a truly engaging experience.
- ✓ **Group work** allowing participants to work in smaller groups to complete activities and workshop ideas.
- ✓ **World-class facilitators** who are dedicated to helping people change their behaviour and actions.
- ✓ **Inspirational and practical content** that can be used immediately.
- ✓ **Certificate of Completion and badge** that you can share on social media.

# PROGRAM STAGES



## Getting Started

On registration, participants will receive confirmation of their booking followed by a reminder 2 weeks before the program. This email will contain a single link that will be used for all of the Zoom sessions and will give you access to the program interactive manual. We ask all participants to pre-install Zoom prior to the Program Launch and to ensure that they have access to a device that has a Web Camera installed.

PL

## Program Launch (Virtual)

This **1 hour virtual launch** will provide participants and their managers with an overview of the program introducing concepts relating to the topic. This will set participants up for success, both throughout the program, and in applying their learning back into the workplace. **This applies both Virtual and Face-to-face programs.**

VIRTUAL

S1

S2

S3

S4

## Program Sessions

Participants will attend either **4 x half-day virtual sessions** or **2 x full-day face-to-face sessions** and will be provided with an extensive program manual.

Our expert facilitators will work with participants to get the most from these sessions.

FACE-TO-FACE

S1/S2

S3/S4

GC

## Group Coaching - Implementation (Virtual)

This **1.5 hour virtual session** will focus on reviewing and embedding the learnings from the previous sessions. **This applies both Virtual and Face-to-face programs.**



## Certificate Of Completion

Participants will receive a personalised 'Certificate of Completion' and a badge that they can share on social media and display in their profiles.



# PROGRAM INVESTMENT

## Individual Investment – Public Programs

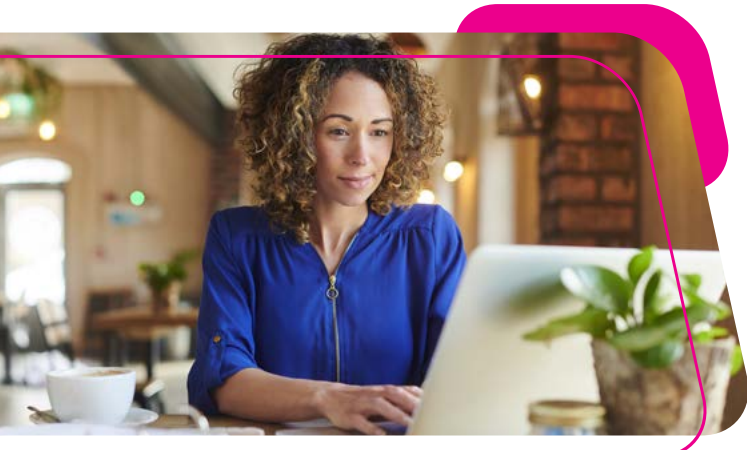
Prices valid from January 1<sup>st</sup> 2024

Individual - (Virtual) ————— \$1,450pp + GST

Individual - (Face-To-Face) ————— \$1,850pp + GST

Corporate Table - 6 Delegates (Face-to-face) ————— \$9,900 + GST

All prices are in AUD



## PERSONAL COACHING

No matter how powerful and helpful a personal development program can be, sometimes we stumble when trying to implement the skills back into our workplaces.

To assist in this area, Proteus is now offering post program personal coaching sessions via phone or Zoom. Each session is **45 minutes** duration and is conducted by one of our professional team.

### Coaching Investment

3 Sessions \$1,500pp + GST

4 Sessions \$1,800pp + GST

5 Sessions \$2,125pp + GST

All prices are in AUD

Please feel free to speak to one of our helpful team to discuss a post program coaching plan for you and/or your team.

# PROGRAM DATES - 2024

### Virtual (4-Half-Day Program)

| Program Launch | Session 1 | Session 2 | Session 3 | Session 4 | Group Coaching |
|----------------|-----------|-----------|-----------|-----------|----------------|
| 15 Feb         | 22 Feb    | 29 Feb    | 07 Mar    | 14 Mar    | 21 Mar         |

### Virtual (4-Half-Day Program)

| Program Launch | Session 1 | Session 2 | Session 3 | Session 4 | Group Coaching |
|----------------|-----------|-----------|-----------|-----------|----------------|
| 18 Apr         | 02 May    | 09 May    | 16 May    | 23 May    | 30 May         |

### Face-To-Face (2-Full-Day Program)

Brisbane

| Program Launch | Session 1 and Session 2 | Session 3 and Session 4 | Group Coaching |
|----------------|-------------------------|-------------------------|----------------|
| 06 Jun         | 13 Jun                  | 14 Jun                  | 20 Jun         |

### Virtual (4-Half-Day Program)

| Program Launch | Session 1 | Session 2 | Session 3 | Session 4 | Group Coaching |
|----------------|-----------|-----------|-----------|-----------|----------------|
| 20 Jun         | 27 Jun    | 04 Jul    | 11 Jul    | 18 Jul    | 25 Jul         |

### Face-To-Face (2-Full-Day Program)

Adelaide

| Program Launch | Session 1 and Session 2 | Session 3 and Session 4 | Group Coaching |
|----------------|-------------------------|-------------------------|----------------|
| 02 Jul         | 09 Jul                  | 10 Jul                  | 16 Jul         |

### Virtual (4-Half-Day Program)

| Program Launch | Session 1 | Session 2 | Session 3 | Session 4 | Group Coaching |
|----------------|-----------|-----------|-----------|-----------|----------------|
| 22 Aug         | 29 Aug    | 05 Sep    | 12 Sep    | 19 Sep    | 26 Sep         |

### Face-To-Face (2-Full-Day Program)

Adelaide

| Program Launch | Session 1 and Session 2 | Session 3 and Session 4 | Group Coaching |
|----------------|-------------------------|-------------------------|----------------|
| 08 Oct         | 15 Oct                  | 16 Oct                  | 22 Oct         |

### Virtual (4-Half-Day Program)

| Program Launch | Session 1 | Session 2 | Session 3 | Session 4 | Group Coaching |
|----------------|-----------|-----------|-----------|-----------|----------------|
| 07 Nov         | 14 Nov    | 21 Nov    | 28 Nov    | 05 Dec    | 12 Dec         |

### Face-To-Face (2-Full-Day Program)

Brisbane

| Program Launch | Session 1 and Session 2 | Session 3 and Session 4 | Group Coaching |
|----------------|-------------------------|-------------------------|----------------|
| 13 Nov         | 20 Nov                  | 21 Nov                  | 27 Nov         |

● Program Launch - 2:00pm - 3:00pm

● Virtual Sessions  
9:00am - 12:30pm

● Face-to-face Sessions  
Day 1 - 8:45am - 4:30pm (Local time)  
Day 2 - 9:00am - 4:00pm (Local time)

● Group Coaching/Implementation - 2:00pm - 3:30pm

2023 2 Apr \_\_\_ AEDT → AEST  
1 Oct \_\_\_ AEST → AEDT

2024 7 Apr \_\_\_ AEDT → AEST  
6 Oct \_\_\_ AEST → AEDT

## Program Launch (Virtual) - 2:00pm - 3:00pm

### For Virtual and Face-to-face programs

This 1 hour Virtual launch will provide participants and their managers with an overview of the program introducing concepts relating to the topics. This will set participants up for success, both throughout the program, and in applying their learning back into the workplace.



## Program Sessions

Virtual - 9:00am - 12:30pm

Face-To-Face - 8:45am - 4:30pm

### Session 1

#### The Power Of Great Communication

- Introduction To Effective Communication
- Dealing With The Fear Factor
- Building Rapport With Your Audience
- Having A Clear Objective
- Constructing A Presentation
- The 5-Step SOSOR Roadmap
- Incorporating The 4 P's Of Presenting
- Delivering Your Message

# 1

### Session 2

#### Understanding And Managing Behaviour

- Introduction To Behaviour And Patterns
- Steps To Understanding Human Behaviour
- Using The Behaviour Factor Model
- Developing Adaptability Strategies
- Understanding Pressure And Stress
- Building Better And Stronger Teams
- Flexing Your Style For Stronger Workplace Relationships

# 2

### Session 3

#### Building And Leading Positive Workplace Cultures

- Creating, Leading And Modelling Great Cultures
- Staying Positive And Understanding The Importance Of Recognition
- Dealing With Miserable People And 'Fighting Clean'
- Leading A Robust And Resilient Workplace
- Leading And Embracing Change
- Helping Your Positive People To Shine

# 3

### Session 4

#### Having Conversations That Matter

- Having Conversations That Matter Early
- Why We Need To Be Proactive With Conflict
- Planning And Delivering Your Counselling Conversation
- How To Manage Staff Poor Performance And Behaviour
- Using The Proteus SIID Formula And Checklist
- Preparing For Your Conversations Across And Up With Diplomacy
- How To Use Your 5-Step Plan With Your Managers And Peers
- Transforming Relationships Within The Workplace

# 4

## Group Coaching/Implementation (Virtual) - 2:00pm - 3:30pm

### For Virtual and Face-to-face programs

This 1.5 hour Virtual session will focus on reviewing and embedding the learnings from the previous sessions.



2023 2 Apr \_\_\_ AEDT → AEST  
1 Oct \_\_\_ AEST → AEDT

2024 7 Apr \_\_\_ AEDT → AEST  
6 Oct \_\_\_ AEST → AEDT

# PROGRAM INVESTMENT IN-HOUSE

This Leadership program can also be conducted In-house (either Virtually, Face-to-Face or a Hybrid approach). Proteus facilitators will run your program for up to 15 people. Extra participants can be added at an additional cost.



## Virtual Investment

### Program Launch - 1 Hour (Virtual)

Program Welcome & Overview

### Program Sessions - 4 x Half-Day (3.5 hours/day)

Up to 15 participants.

### Group Coaching / Implementation - 1.5 Hours (Virtual)

Individual or Group Presentations - Optional  
Organised Internally by the Client

**\$21,000 + GST**

Extra participants over 15 charged at \$1,250pp + GST



## Face-to-Face Investment

### Program Launch - 1 Hour (Virtual)

Program Welcome & Overview

### Program Sessions - 2 x Full-Days (8 hours/day)

Up to 15 participants.

### Group Coaching / Implementation - 1.5 Hours (Virtual)

Individual or Group Presentations - Optional  
Organised Internally by the Client

**\$26,000 + GST**

Extra participants over 15 charged at \$1,650pp + GST

Hybrid (combination of Virtual and Face To Face delivery) options are available upon request. Additional travel costs may apply to rural and regional areas.



**Virtual:** Interactive Program manual PDF copy

**Face-to-face:** Printed Program manual



Proteus Certificate of Completion



Full Zoom & Teams Management for Virtual Programs



**For further information contact our team on: 1300 219 903**

**Cancellation Policy:** Payment is required before the commencement of training. All payments within 7 days of the program date must be paid by credit card or direct debit. All cancellations/transfers must be received in writing. Refunds will not be given unless at least 30 working days notice prior to the program is provided. No refunds will be given after this date. A 10% (of total

cost) administration fee will be deducted for all cancellations. If you are unable to participate, a substitute participant (transfer) is welcome if written notice is given prior to the program but will incur a \$75 administration fee.

\*Proteus Leadership reserves the right to change the facilitators/speakers or the advertised price.

# USING ZOOM

Proteus Leadership has committed to using the ZOOM platform for our Virtual Webinars, Workshops and Multi-session programs. Here are some things about your ZOOM program that you should know:

- It is simple and intuitive to set up
- A link to your program will be sent to you on confirmation and then on the day of the program. You will be asked to click on the link, download and join the meeting or webinar
- You can participate on any device, however a desktop or laptop computer is recommended
- With updated security features, Zoom is a safe place to meet virtually
- Throughout your program, interactive features will be used including: Polls, Q&A and Chat boxes
- In our workshops and Leadership programs participants will be able to work in multiple breakout rooms where they can interact with each other in groups

Proteus facilitators will make your Virtual program an interactive and informative experience that will change the way you lead.

## Virtual

Although our preferred Virtual platform is **ZOOM**, we are now offering to run our Virtual Programs and workshops on **TEAMS** for In-house programs. However, all of our publicly scheduled workshops will remain on Zoom at this stage. Remember, you don't have to sign up to Zoom to use it.

# HOW TO REGISTER



## Payment Methods



Credit Card



Request Invoice



Call us on 1300 219 903

## Payment Methods



Credit Card



Request Invoice



Direct Debit

# proteus LEADERSHIP

*creating great leaders*

[www.proteusleadership.com](http://www.proteusleadership.com)

info@proteusleadership.com | 1300 219 903



Adelaide

Brisbane

Melbourne

Noosa

North Sydney